

VILLAGE NEWS

Chadwell, Eastwell, Eaton, Goadby Marwood, Scalford, Wycomb

ISSUE 344 AUGUST 2017 <http://villagenews.e-kit.co.uk>

All printing by PRINT & BUY SERVICES Ltd — tel. 01664 482480
11 Pate Road, Leicester Road Industrial Estate, Melton Mowbray
Inkjet and laser supplies - see advertisement on page A7

CONTENTS

Contacts and Post Offices	2
Hire of village halls	2
Post Office opening times	2
Scalford Parish Council	3
Planning applications	3
Eaton Parish Council	4
The Rector's letter	5
C of E notices and services	6/7
Methodist services	7
Letter from Revd James Skinner	8
General notices	9
Advertising pages	A1-A12
Mobile library	10
Forthcoming events	10/11
Special events in August	11-13
Regular events/meetings	14
Small ads	15
August diary	16
Tote winners	16
Planned future dates 2017	16

ADVERTISING PAGES

I'm sorry - the advertising pages for September are just not going to happen, nor does it look very likely for October. I'll try and contact everyone during September, and hopefully they'll reappear in November.

There are only enough left to cover about 2/3rd of this month's issue, so these will be distributed evenly to the villages.



Please may I have all news (headed "yellow pages") for September by Friday, 18th August
Sue Watford, 4 Stathern Road, Eastwell, LE14 4EN
Tel 01949 861256
SueWatford@aol.com

LOCAL CONTACTS

Belvoir Vale Tennis Club	01949 861946
Eastwell History Group	John Wood, 01949 861836 Graham Doyle, 01949 860836
Eaton Local History Group	Rod White, 01476 870680
Eastwell Village Hall website	www.eastwell.org.uk Facebook - facebook/eastwellvh
Eaton Community Park Assn	Tim Bryan, 01476 879380 Eatoncompark@aol.com
Ironstone Churches website	www.ironstonechurches.com
Little Gems	Chris Alexander, 01664 464802
Messy Church	Lisa Neale, 07399 627117 lisa.ironstone@btinternet.com
Parish Reading Group	Colette Stein, 01664 464823
Scalford Parent Toddler Group	Anita, 07540 102739/01664 852315
Scalford PreSchool	Janet Leek, 01664 444 268
Scalford Post Office	Kathleen Hewitt, 01664 444868
Scalford Village Hall	Andy Wade, 01664 444 229
Scalford Women's Institute	Di Taylor, 01664 444051
Scalford Neighbourhood Watch	Alan Hodgkinson, 01664 444689
Cllr Elaine Holmes (MBC)	01664 464230 elaine.holmes191@btinternet.com
Cllr Byron Rhodes (LCC)	01949 860029, brhodes@leics.gov.uk

HIRE OF VILLAGE HALLS

EASTWELL	eastwellvh@gmail.com	01949 869492
EATON	Samantha Bradford tel 01476 879300 AFTER 10.00 am PLEASE	bradfordsam@hotmail.com
GOADBY MARWOOD	Colette Stein	tel 01664 464823
SCALFORD	Sarah Allen/Bex Davies	tel 01664 444703, mobile 07399 852111 sezzy_2000@yahoo.com
WALTHAM	Jon Riley	wwh.bookingclerk@gmail.com



OPENING TIMES

SCALFORD POST OFFICE AND SHOP

Monday, Wednesday, Thursday, Friday, 9.00 am to 1.15 pm

EATON POST OFFICE AND SHOP - AT EATON VILLAGE HALL

Thursdays, 11.00 am to 1.30 pm

All postal services, cards, sweets, laundry & dry cleaning service

SCALFORD PARISH COUNCIL

Clerk: Chris Hill, 43 Bowley Avenue, Melton Mowbray, Leics., LE13 1RU
Tel: 01664 411705 Email: clerk@scalfordpc.org.uk

AUGUST NEWS**Parish Council Meetings:**

Wednesday, 9th August at 7.30 pm in Scalford School
Wednesday, 13th September at 7.30 pm in Scalford School

Agendas and minutes are on the village notice boards the Thursday before the meeting,
or on the following website: www.scalfordpc.org.uk

Allotments - Stonestile. There are several reasonable sized allotments available at the top of Sandy Lane. If you are interested and require further information, please contact the clerk - details above.

Allotments - Horsepool. There have been several thefts from sheds at these allotments and whilst it will not stop these, it has been pointed out that on occasions the gate is left unlocked overnight. It would therefore be appreciated if tenants would make sure the gate is locked when they leave.

Hedges/trees. A reminder that it is resident's responsibility to ensure that any hedges/trees do not become overgrown if adjacent to pavements and roads. It has been reported that several pavements in the village are becoming difficult to walk along due to overgrown hedges.

Parish Councillors.

Elizabeth Bryan (chairman) 01664 444206

Brian Dodd	01664 444215
Tim Spencer	01664 444573
Margaret Wright	01664 444354



Chris Hill, clerk

PLANNING APPLICATIONS

17/00836/FUL. Field 8636 Eastwell Road, Waltham
Relocation of Hop Inn Rabbit Hotel and erection of storage buildings

17.00942/TCA. Marland, 26 Vicarage Lane, Eaton
Reduce and reshape by 1.5 metres one cherry tree and one holly tree; reduce and reshape by 2 metres one holly tree.

17/00784/FUL. The Old Mill House, 1 Branston Road, Eaton
Conversion of an existing stable block to single dwelling.

EATON PARISH COUNCIL

Clerk: Chris Hill, 43 Bowley Avenue, Melton Mowbray, Leics., LE13 1RU
Tel: 01664 411705 Email: clerk@eatonpc.org.uk

AUGUST NEWS**Parish Council Meetings**

No meeting planned for August
18th September at 7.30 pm in Eastwell Village Hall
Members of the public are welcome.

Agendas and minutes are on the village notice boards
on the Friday before a Thursday meeting and a Tuesday before a Monday meeting,
or on the following website: www.eatonpc.org.uk

New Councillor

The Parish Council are pleased to welcome Mr Les Bettley onto the Council; details below.

Neighbourhood Watch.

Following a spate of recent thefts in the village, the Parish Council are considering the possibility of setting up a Watch and would like to hear from residents who would be interested in being involved. In the first instance, please contact either the Chairman, Marcus Hardy - details below, or the Clerk - details above.

Allotments

The Parish Council has several allotments available in Eaton. Anyone wanting further information, please contact Chris as per details above.

Parish Councillors

Chairman:	Marcus Hardy	01476 879124
Vice chairman:	Mike Whiston	01476 870043
Councillors:	Rebecca Woolley	01664 464194
	Audrey Cawthorn	01949 861893
	Roger Coonie	01476 870721
	Les Bettley	01476 879164

Chris Hill, clerk

EATON VILLAGE HALL**Are you looking for a venue for your -**

CHILDREN'S PARTY : FAMILY GATHERING : GROUP MEETING : FUND RAISING EVENT
EXERCISE CLASS : FUNERAL WAKE AGM : SOCIAL ACTIVITY : TEA PARTY : JUMBLE SALE
COFFEE MORNING EVENT : MUSICAL SOIREE DANCES : DANCE GROUPS : CRAFT SHOW?

Then look no further!

EATON VILLAGE HALL has excellent kitchen facilities, car parking for 20/25 cars, pleasant village setting, lawned area for children's games, raised stage for performances/speeches, ladies & gents toilets.

PLEASE CONTACT THE BOOKINGS SECRETARY: Mrs Samantha Bradford 01476 879300,
AFTER 10.00 am PLEASE, or bradfordsam@hotmail.com for further details and availability.

CHURCH OF ENGLANDwww.ironstonechurches.com**Catching the wave**

Dear Reader of the Village News,

I've enjoyed surfing (body-boarding as they now call it - the flat form of surfing!) for as long as I can remember. Growing up in Northern Ireland, many of our holidays were spent by the seaside on the north coast. Here, where the powerful Atlantic waves broke onto golden sandy beaches, I first learnt to surf with my wooden board. The water was bracing to say the least, and there were no wetsuits in those days!

A few weeks ago, Mary and I enjoyed a week spent body-boarding with our younger daughter Jo at Woolacombe in Devon. If you've been to Devon, then you'll know what a beautiful spot it is - three miles of golden sand, lots of super coastal walks, and good surfing, not to mention rather delicious cream teas!

Each day, we donned our wetsuits and took our body-boards down to the sea. Each day, the waves were different and we had to wait and watch for a breaking wave that might carry us in. Timing was vital, if we were to catch the wave at the right moment. When we did - some of the time at least! - it was a real joy and pleasure to be carried on our boards all the way in to the shore, until we started to scrape the sand.

I find surfing/body-boarding to be deeply relaxing and refreshing. It teaches me to wait and have patience, for catching a wave can't be rushed. It reminds me of just how small and fragile I am in comparison with the

vastness and power of the sea, and how I need to respect and to work with the forces of nature. It also speaks to me of the One who is the creator of us all - as the Psalmist puts it: *"Mightier than the thunder of the great waters, mightier than the breakers of the sea - the Lord on high is mighty"* (Psalm 93, verse 4)

Like surfers waiting to catch a good wave, we often spend a lot of time in our lives waiting and watching for something to happen. Yet those moments do come when we need to 'catch the wave' if we are to let it carry us further on. That's true for human history, and the Brexit process we are living through could be seen as one such moment. It's also true for our lives, and those personal choices we have to make. Through all of this, God longs for us to discover the ocean of His love which He shows us in Jesus, and to catch the wave of His Spirit that comes to carry us joyfully forward through life to the shore beyond.

With all good wishes,



(John Barr, Rector)

**CHURCH OF ENGLAND**www.ironstonechurches.com**RECTOR****The Revd Canon John Barr****The Vicarage, 23 Melton Road, Waltham on the Wolds, LE14 4AJ**Email: johnbarr2817@gmail.com

Telephone 01664 464265

The benefice administrator is Mrs Lisa Neale

Email: lisa.ironstone@btinternet.com Office telephone 07399 627117*Office hours - Term Time only:**Wednesday 9.30 am to 2.30 pm**Monday, 1.00 pm to 3.00 pm***CHURCHWARDENS**

Eaton	Don Shields (01476 870580)	
Eastwell	Sue Watford (01949 861256)	
Goadby Marwood	Harry Westropp	Neil Rogers (01664 464779)
Scalford	Penny Clemons (01664 444687)	
Stonesby	Jill Edmond (01664 464602)	Jill Stannage (01664 464 011)
Waltham	Richard Miller (01664 464240)	Libby Leiper (01664 444 266)

CLEANING AND FLOWER ROTAS**EASTWELL**

Flowers	6th August - <i>Annie Casson</i>	20th August - <i>Judy Goodson</i>
Cleaning	First two weeks: <i>Marion Wood</i>	
	Second two weeks: <i>Judy Goodson/Sue Watford</i>	

EATON

Cleaning	4th/11th August	<i>Blanche Hubbard & Aileen Dee</i>
	18th/25th August	<i>Wendy Hart</i>
Flowers	6th August	<i>Mrs S Bettley</i>
	13th/20th August	<i>Mrs C Kemp</i>
	27th August	<i>Linda Burr</i>

GOADBY MARWOOD

Flowers	27th August	<i>P Sutton</i>
Cleaning	27th August	<i>Joan and Dave Gardner</i>

SCALFORD

Flowers	7th August	<i>Karen</i>
	21st August	<i>Penny C</i>
Cleaning	7th August	<i>Penny and Karen Oates</i>
	14th August	<i>Helen and James McNamara</i>
	21st August	<i>Helen and James McNamara</i>
	28th August	<i>Helen and Val Cunnington</i>

AUGUST SERVICES**IRONSTONE VILLAGES COMMUNION AT 10.30 am**

Sunday, 6th August	Scalford
Sunday, 13th August	Stonesby
Sunday, 20th August	Eastwell
Sunday, 27th August	Waltham

**OTHER SERVICES**

Sunday, 6th August	Eastwell	4.00 pm	Prayer, Praise & Pimms (See page 12)
Friday, 11th August	Stonesby	7.00 pm	Celtic Evening Prayer
Sunday, 13th August	Waltham	10.30 am	Messy Church
Sunday, 20th August	Scalford	4.30 pm	Family 430

St DENYS CHURCH, EATON

The Parochial Church Council need someone to replace the current retiring honorary secretary. This mainly involves taking minutes at the four meetings a year and other small related tasks. The person does not have to be a church member. For more information, please contact the retiring secretary on 870636 or email jbrewhiting@btinternet.com.

SCALFORD METHODIST CHURCH**AUGUST SERVICES****CHURCH MINISTER:**

The Revd James Skinner, 01664 482132

CONTACTS:

Reg Talbott, 01664 444343

Sue Gowin, 01664 410684

Avril Talbott, 01664 444639

6th August	10.45 am	Rev James Skinner (Holy Communion)
13th August	10.45 am	Deacon Dawn Canham
20th August	10.45 am	Mrs J Key
27th August	10.45 am	Mrs L Sergeant

**EASTWELL CHURCH
FLOODLIGHTING****This month the church will
be floodlit**

⇒ to celebrate the birthdays
of:

JOHN WATFORD on 21st August

GILLIAN GOODSON on

25th August

SUE WATFORD on 30th August

⇒ To celebrate the wedding
anniversaries of:

JUDY & GEOFF GOODSON on

12th August;

ADRIAN & ELEANOR CENEY

on 14th August;

TERESA & JO MANKELOW

on 25th August,

⇒ and in memory of:

TONY GOODSON on

7th August

**From the Revd James Skinner**

Dear Friends,

For the last few days (24th July) Kath and I have been enjoying the Tour de France. We have enjoyed both the cycling and the spectacular scenery they have cycled through, whether it's been fields of sunflowers, high mountain passes or streets of historic towns. We have been amazed at the strength and commitment of all the competitors; in the way that they have adapted to the different terrains, in all weathers, and sometimes in the face of mechanical problems too! The route has not been easy and there have been crashes leading to the retirement of some competitors.

Following the Christian way could be compared to a long cycle journey; a journey with many different and contrasting stages, some flat and easier, others challenging, long, steep and windy. Some may have pleasant views, others may take us to places where we would not choose to go.

Journeying is an important theme in the Bible with many significant people such as Abraham, Moses, Jesus and Paul, all going on journeys. Journeys are important moments for us, as they are times when we can learn more about ourselves, our faith, and how God enables us to deal with life's difficult challenges. The late Sydney Carter, in one of his best-known songs, expresses how many of us can feel :

*As I travel through the bad and good,
Keep me travelling the way I should;
Where I see no way to go
You'll be telling me the way, I know.*

*Give me courage when the world is rough,
Keep me loving though the world is tough;
Leap and sing in all I do,
Keep me travelling along with you.*

Words and Music: (c) 1971,
Stainer & Bell Ltd,
23 Gruneisen Road,
London N3 1DZ

I don't know which point you have reached on your journey. However, Christians have the reassurance of knowing that God travels with us in all that we experience and will never let us down.

With best wishes,

James



GENERAL NOTICES

HOSE & DISTRICT GARDENING CLUB

Shake off the winter gardening blues and join us on the first Thursday of each month at 7.30 pm in Hose Village Hall

Membership - £15 per annum (reduced rates for partial year membership), to include after meeting refreshments.

Visitors - £3 per evening (first trial evening free)

7th September - History of the Bramley apple
16th September - Visit to Norwell Nursery
5th October - Learning from Landscapes
2nd November - A seasonal camera
7th December - Once upon a time at Christmas

Why not give a meeting a try? You'd be most welcome. For further information please contact Helen Cheetham on 01949 860350.

WANTED

Garage or barn space to store my sports car over winter. Close to Eaton preferred. Please email Steve at scraggy.lively@gmail.com

ALSO WANTED

Old Brickyard Tea Rooms

Tombola prizes, entertainers and volunteers for the charity vintage car event.

THE VILLAGE NEWS FUNDS HELD



Last month's balance:	£206.00
Donations this month:	£200.00
	£406.00
Printing (August).....	£95.00
Total at end of July:	£311.00

VALE MEDICAL GROUP Patient Participation Group



(Long Clawson Medical Practice, Stackyard Surgery, Woolsthorpe Surgery, Long Clawson Pharmacy)

Dear patients,

A big 'thank you' to all 478 of you for talking to us during PPG Week in June. We have collated your comments and forwarded them to the surgery.

Open Access morning surgeries are still much valued by patients. Patients have found it convenient to make appointments at all three surgery sites. Patients said:

- **It can be difficult to get a nurse appointment.** This has been addressed and we now have a full complement of nursing staff.
- **It would be useful to have Wifi availability in the waiting room.** This will be investigated.
- **There are still some problems with privacy in the waiting room and pharmacy.** We need to remind patients that rooms are available on request for privacy.
- **75% of patients were unaware of/did not use online facilities to make appointments/order repeat prescriptions.** This facility is easy to use and frees up telephone lines. Reception staff are happy to assist patients in signing up for this.

Examples of comments offered by patients were:

'Could not improve if you tried'

'Best surgery I have used'

'should be rolled out across the country'

Thank you, again, for your time - Ellen Mell - on behalf of VMG PPG

MOBILE LIBRARY

SCALFORD Monday, 7th August, in the village centre from 12.45 to 13.05 hrs

EATON Monday, 14th August, on Church Walk from 11.10 am to 11.30 am

CHADWELL, EASTWELL, GOADBY MARWOOD, WYCOMB: Thursday, 10th August

Eastwell, 14.00 to 14.15 hrs at the telephone box

Goadby Marwood, 14.25 to 14.40 hrs on the Main Street near the junction

Chadwell, 14.50 to 15.00 pm at the village top

Wycomb, 15.05 to 15.35 pm at Wyggeston Cottage.

Tel: 0116 265 6988

Email: libraries@leics.gov.uk

Website: www.leics.gov.uk/libraries

24 hour renewals: 0845 602 2815



FORTHCOMING EVENTS



DOVE COTTAGE DAY HOSPICE

PLANNED EVENTS

Saturday, 7th October AUCTION, VINTAGE CLOTHES & TABLE TOP SALE

Viewing 12.00 noon, bidding 1.30 pm
Free entry. All welcome.

If you wish to donate items, please bring them to the hospice w/c 2nd October, or please phone 01949 860808 and we may be able to organise collection.

Friends of St Denys

Invite you to a

'HARVEST CELEBRATION'

Saturday, 16th September

3 course meal, live singer and auction of promises.

Something for everyone!

EATON VILLAGE HALL

£12 ticket, £5 children 12-16 yrs, under 12s free

Ring to reserve your place:

Carole, 01476 879106

Kathy, 01476 870728

Jacqui, 01476 879124

CONCERT

Scafold Church

Saturday, 28th October

Close Harmony and Millstone



LIVE@EASTWELL

LIVE AT EASTWELL

DATES FOR THE DIARY

Saturday, 30th September

The Aurora Chanson Trio

Saturday, 14th October

Brooks Williams and Lightning Express

Saturday, 11th November

Worry Dolls

Friday, 1st December

Rackhouse Piffer

Saturday, 10th February 2018

Sam Green & the Midnight Heist

Saturday, 10th March 2018

Govannen

Forthcoming Events, cont.**EASTWELL CHURCH
PHOTOGRAPHIC
COMPETITION**

Eastwell is holding a photographic competition during the weekend 30th September/1st October, in conjunction with the Harvest Festival weekend. The photographs will be displayed in church and judged on Sunday morning, with winners being announced at the harvest tea being held after the Harvest Festival service in the village hall.

We have a local photographer as judge, so, to maintain anonymity, please NO photographs of family or friends. Entries need to be placed in an envelope along with your name and category on the back of the photograph, and passed to either Janet Knapp (01949 861767) or Sue Watford (01949 861256) NO LATER THAN WEDNESDAY, 27th SEPTEMBER.

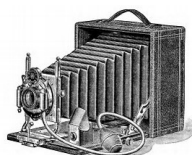
CATEGORIES:

- A Church/Village Hall life
 B Seasons in and around the Village (to be displayed as Spring (B1), Summer (B2), Autumn (B3) and Winter (B4))
 C Nature - Flora and Fauna
 D The Skies above Eastwell
 E Eastwell scenes
 F Open Section:
 (1)General - anything, anywhere;
 (2)Comical - anything.

If anyone has ANY photographs of people and places, etc., of Eastwell through the decades we could borrow for display purposes only, please could they also be passed to Janet or Sue, along with your name, so they can be returned.

So, finally, we'd just like to say:

“Get clicking!”

**fitnesspilates**

Come along and join me at
 Scaford Village Hall Monday afternoons
 2.00 to 2.45 pm

Back in time for the school run!

**This class is a fusion of movement,
 pilates, bodyweight conditioning and
 sometimes stability ball work.**

Ginny Winder 07793 748480
 (level 3 REPS)

*Courses run throughout school term at
 £5 session (payable in advance) or
 £6 per individual session.*

**SPECIAL EVENTS
IN AUGUST****Mini Open Art Competition**

Theme - **Bugs & Butterflies**
 paint • draw • sew • sculpt

Let your imagination run wild

Max size - postcard 4"x 6" 146 x 105mm

£2 per entry or £5 for 3 - max 3 per person

1st prize - £10

2nd prize - £7 3rd prize - £5

Judging by public vote

Entry deadline 8th August

On display at the tearoom 10th - 29th August

Tel: **07803 206852** or see our website for full details
www.oldbrickyardteagarden.co.uk



find us at:
 Tearoom open daily 10am - 5pm until end August except closed Weds
 Old Brickyard Tea Garden, C&C Plants, Eastwell Road,
 Scaford, Melton Mowbray LE14 4ST

SPECIAL EVENTS IN AUGUST

SUNDAY, 6th AUGUST at 4.00 pm
GYES GARTH GARDEN, EASTWELL

In celebration of summer in Eastwell,
 you are invited to
 a simple service of prayer and praise,
 a chance to appreciate the
 glory and wonder of creation

A short service suitable for
 all ages and all persuasions
 (you do NOT need to be a churchgoer)
 followed by Pimms in the garden.

*If the weather proves to be
 absolutely abominable, we have Plan B:
 we will be using the Village Hall*

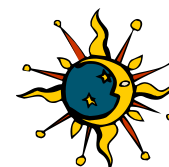
More information from Stella MacGregor on
 01949 861817, or Sue Watford 01949 861256

Eastwell Fete

Saturday,

19th August

11.00 am to 5.00 pm



DOG SHOW - 11.30 am

We still have vacancies for both craft stalls and
 street market stalls:

In the Hall grounds £20

Street market £10

Booking forms available from

SueWatford@aol.com, tel 01949 861256

INDIAN NIGHTS

Friday, 18th August at 7.30 pm

GOADBY MARWOOD

VILLAGE HALL

Two course meal and
 glass of wine or beer

Tickets: £12.50 - booking essential

Contact: Sandra Hine on 01664

464700



Sunday, 13th August,
2.00 to 4.00 pm

AFTERNOON SOIREE
with the Radcliffe Choral

By the lake at

GOADBY MARWOOD HALL

*Cream teas, Pimms, Belvoir Cordials
 and sandwiches will be available
 and the gardens are open*

Toilet facilities at the Village Hall

£10 per person

To book your tickets, please phone

01949 860808.

In aid of the Dove Cottage Hospice

Hatha Yoga for Everyone

Monday, 5.30 to 6.45 pm Eaton Village Hall

Monday, 7.15-8.45 pm: Eaton Village Hall

Tuesday, 6-7 pm (yogalates): Eastwell V Hall

Thursday 9.30-10.30 am

Eaton Village Hall (£6 session)

Thursday 7.30-9.00 pm

Denton Village Hall (£6.50 session)

(All drop in sessions)

Contact Erica on 07805 206976

Special Events in August, cont.

EATON HORTICULTURAL SOCIETY
including
EASTWELL & GOADBY MARWOOD

The 92nd ANNUAL EXHIBITION OF FLOWERS, FRUIT, VEGETABLES & HOMECRAFT to be held at Eaton Village Hall on **SATURDAY, 26th AUGUST** from 3.30 to 6.00 pm.

We would love to see old and new exhibitors. This year, again, there will be NO CHARGE for entries or admission.

The 64 categories include flower arrangements (using your own or bought flowers), home grown garden produce and flowers, cakes (recipes supplied), jams, chutneys, eggs, knitting and sewing items. Something for everyone! The children's section is open to grandchildren of village residents - with prize money to be won!

The SCHEDULE of categories, with entry form and cake recipes to be used, can be obtained **now** from Don and Jean Shields, 1 Church Walk, Eaton, 01476 8704580, or Judith Darby, 12 Main Street, Eastwell, 019490 860645. Copies of the SCHEDULE will be displayed at village halls and various notice boards.

TO ENTER: Registration (25p fee per person) of your entries will be taken at EATON VILLAGE HALL (KITCHEN) ON Monday 21st AUGUST, 6.30 to 7.30 pm, OR taken any time at Don and Jean Shields (Eaton) or Judith Darby (Eastwell) BEFORE 26th.

DAY OF SHOW: All entries to be staged from 9.00 am onwards, and hall cleared for judging by 12.00 pm. Doors open to public and exhibitors at 3.30 pm. Entries to be removed after 6.00 pm.

RAFFLE - TOMBOLA - HOME MADE CAKES
TEA - COFFEE - SOFT DRINKS
ALL DONATIONS WELCOME for the TOMBOLA - please give to Jean Shields.

Mark the date in your diary - come along - enter something - have a cuppa - join us for the chat and banter and delicious homemade cakes and to look at the super exhibits.

*Don or Jean Shields
will be happy to answer any questions
01476 870580.*

**Old Brickyard
Tea Garden**

Art & Craft Classes
Friday 11th Aug 7-9pm

Oranges & Lemons - painting with acrylics
Thursday 17th Aug 7-9pm
Felting Bowls and Balls!
All materials + refreshment - £20
Booking essential, contact details below

Glass Fusion Workshops

Thurs 10th, 24th, 31st Aug 7-9pm
All workshops suitable for beginners - £30
Booking essential, contact details below

Discover Coffee

Friday 18th Aug 7-9pm
Fundraising for HOPE AGAINST CANCER
Discover the history/story and experience the tastes of different coffees.
Booking essential, contact details below

VINTAGE CAR & BIKE MEET
Sunday 27 August 10am - 5pm

Fundraising for HOPE AGAINST CANCER
Tombola • Music • Dancing
Car boot, art/craft & vintage stalls
Enjoy a fun day out and help us raise money for a good cause
CAN YOU HELP? We need tombola prizes, entertainers, volunteers

Find full details of all our events on our website
find us at: www.oldbrickyardteagarden.co.uk
 Tel: 07803 206852
oldbrickyardtea@icloud.com



REGULAR EVENTS/MEETINGS

SCALFORD WOMEN'S INSTITUTE

There will be no meeting during August.

EATON VILLAGE CAFE

Wednesday, 30th August from 10.30 am to 12.30 pm in Eaton Village Hall

LINE DANCING

Each Tuesday and Thursday from 7.00 to 9.00 pm in Eaton Village Hall:
£3.00 per session Please telephone 07545 642083 for details

LUNCH - EASTWELL

Wednesday, 16th August at 12.30 pm. Maple Cottage, 1 Water Lane, Eastwell
Please phone Audrey on 01949 861893 by Friday, 11th August if you would like to join us

EASTWELL VILLAGE HALL

AFTERNOON TEA

Wednesday, 2nd August, from 3.00 to 4.30 pm (01949 861893)

YOGA: No yoga during August

YOGALATES

Tuesdays 1st/8th/15th /22nd and 29th August at 6.00 pm (07805 206976)

THE VALE SCOTTISH DANCERS

Thursdays, 3rd/10th and 31st August at 7.30 pm

ADULT ART CLASS

No adult art class during August

PRESCHOOL DANCE CLASS

No preschool dance class during August



AFTERNOON TEA

**Eastwell Village
Hall**

Wednesday,
2nd August,
3.00 to 4.30 pm

All are welcome



EASTWELL LUNCH

Wednesday, 16th August at 12.30 pm
Maple Cottage, 1 Water Lane, Eastwell

*Please phone Audrey on
01949 861893 by Friday, 11th August,
if you would like to join us.*



EASTWELL VILLAGE HALL

**THE WELL COMMUNITY PUB from 6.30 pm on
FRIDAYS, 11th and 25th August**

Contact number: 01949 869144

SMALL ADS

CYCLE SERVICING AND REPAIRS

From a puncture repair to a full service. Contact Michael Stanley, 07704 108993.

CERAMIC GIFTS

Handmade ceramic gifts for sale in Scalford. Call Angela on 01664 444534 to view.

DRUM LESSONS

All ages and standards are absolutely welcome. Visit www.jonrileydrums.com for more information.

A J GREEN ROOFING LTD

For all your roofing needs from tiling, slating, flat roofs, guttering and repairs. No job too small. Over 20 years experience. For a free quotation call Andrew on 01664 444837

LAWNMOWING AND STRIMMING

Contact Dave on 01664 464755

HAVE YOU GOT AN OIL-FIRED AGA?

If so, call 01572 823841 to find out how to save up to £1,000 a year.

EXERCISE CLASSES

Aerobics and body tone.

Contact Suzanne Rathbone, 01949 860911

D M CASEY, CARPENTRY & JOINERY SPECIALIST

Tel: 01664 444664
Mobile: 07891 921780

VALE FENCING

Gates, fencing, decking, and aspects of joinery - Barry Hudson, tel 07834 550934

HATHA YOGA COURSES

Weds, 1.30 to 3.00 pm Waltham V Hall
Weds, 7.30 to 9.00 pm Waltham V Hall
Tel Helen on 07850 024179

COMPUTER SOS

Your local specialist for: slow/crashed computers, internet setup/problems, etc. Tel 01949 861834/07894 352517

MOBILE SPORTS & REMEDIAL MASSAGE THERAPIST, GRAHAM SPENCER

Get your muscular aches and pains eased with a deep tissue massage in the comfort of your own home. Member of the SMA and FHT professional bodies. Call Graham on 07906 871291

****** TAXI SERVICE ******

Martin's (of Asfordby), Long distance or local journeys. Airport transfer specialist. 01664 513000 or 07951 840018

QUALIFIED BOOKKEEPER

Available for immediate work

Please call or email to discuss
Tel 075086 77371 Email:
sageandonionbookkeeping@virginmedia.com

Art Class

Wednesday 10.00 am to 12.00 noon
Eaton Village Hall
£4.50 inc. Tea/coffee and biscuits!
Beginners welcome
Contact Erica on 07805 206976

LOGS FOR SALE

Free local delivery and stacking

£85.00 per cubic metre bag

Please ring 01949 869032,
078011 40630, or 078182 63780
or email bramlee@hotmail.com

A quality service ... we stack your logs,
not tip them on your drive

SCRUFFIES

GROOMING PARLOUR

Grooming with kindness and care
Julie Goodwin, Field View, Chadwell
Tel. 01664 444415

SEWING SURGERY

Last Tuesday of each month

Bring your sewing mishaps/disasters/
questions/ideas. Open all day
Please phone 01664 444441
to arrange alternative day/time
Scalford Interiors inc. Sarah Sew 'n Sew
School Lane, Scalford

Yoga for everybody

Simple steps that promote:
HEALTH, WELLBEING and RELAXATION
Wednesdays 7.00pm to 8.30pm
EASTWELL VILLAGE HALL

Caroline Arthur
Tel: 01949 843 946 Mob: 07900473426

AUGUST DIARY

Wednesday	2nd	Afternoon Tea, Eastwell Village Hall	14
Sunday	6th	Praise, Prayer and Pimms, Eastwell	12
Wednesday	9th	Scalford Parish Council meeting	3
Friday	11th	The Well, Eastwell Village Hall	14
Sunday	13th	Afternoon Soiree, Goadby Marwood Hall	12
Wednesday	16th	Eastwell lunch	14
Friday	18th	Indian Nights, Goadby Marwood Village Hall	12
Saturday	19th	Eastwell Fete	12
Friday	25th	The Well, Eastwell Village Hall	14
Saturday	26th	92nd Eaton Horticultural Society Show	13
Wednesday	30th	Eaton Village Cafe	14

Not as much happening as you'd imagine in August. Hope I've left nothing out.



July Tote Winners

CHADWELL

J Goodwin : J Nash : C Stokes

GOADBY MARWOOD

9 N Needham : 26 C Stein : 48 M Hargrave : 55 Sophie Billington

EASTWELL

42 Janet Lusic : 29 Laura Hill : 85 Stacey Starbuck
8 Ian De'ath : 64 Mr Stubbs

PLANNED FUTURE DATES 2017

Saturday, 16th September Harvest Celebration, Eaton Village Hall
Sunday, 1st October Eastwell Harvest and Photography Weekend
Saturday, 28th October Close Harmony & Millstone Grit concert, Scalford
2nd December Global Harmony concert, Waltham church

(Please also see Live at Eastwell dates on page 10)
Any other booked big-event dates? Please let me know.