

VILLAGE NEWS

ISSUE 249

SEPTEMBER 2009

All printing by: PRINT & BUY SERVICES—tel. 01664.482480
11 Pate Road, Leicester Road Industrial Estate, Melton Mowbray
Inkjet and laser supplies—see advertising pages

www.villagenews.e-kit.co.uk

Contents

Parish Councils	2-3
Notices	2-5
September calendar	6
Village Hall hire	6
Special events/meetings	7-10
Bingo	9
Forthcoming events	10
Local group contacts	11
Mobile library visits	11
Small ads	12
Tote winners	13
Church notices	14-15
Methodist Church services	15
Church of England services	16

On the right:
"Clover" by Brian Hollingshead

Please may I have all news for
the October issue by
Tuesday, 22nd September
Sue Watford,
4 Stathern Road, Eastwell,
Melton Mowbray, LE14 4EN
Tel. 01949 861256
SueWatford@aol.com

MONEY, MONEY, MONEY!

There is only £100 left in the kitty,
which is paying for this month's
Village News—with £35 change!
Therefore any donations towards
the cost of printing would be very
much appreciated.

We started the year with £315,
there have been approximately £300
in donations since and the printing
has cost £570.



Eaton Parish Council

Clerk: Chris Hill
Tel No: 01664 411703
Email: clerk@eatonparishcouncil.org.uk

Next meetings:

Please note change of date for September meeting

Thu 10th September: Eaton Village Hall

Thursday, 8th October: Goadby Marwood V Hall

7.00 to 7.10 pm: Public participation

7.10 pm: Parish Council Meeting

Above times are approximate

Members of the Public are welcome

Agendas and minutes are on the village notice boards
the Friday before the meeting, or on the website
(address to the left)

The parish councillors and their contact details are
also on the website if you would like one of them to
raise an issue on your behalf.

AUGUST NEWS

Allotments

If you are interested in having an allotment, please
contact the clerk.

Street Lighting

It has been decided for the time being to leave all
street lights in Eaton on: however, a list will be
posted on the notice board shortly of those that will
be turned off at midnight in the near future.

The Big Switch Off

This is a partnership of local authorities in
Leicester, Leicestershire and Rutland, and the aim
is to promote energy saving during the week
commencing 12th October 2009. Please see local
notice boards for further information.

Chris Hill, clerk

EXERCISE BIG DROP

**Charity Abseil at
St Wulfram's Church,
Grantham**
Saturday, 19th September
9.30 am to 4.00 pm

The funds raised will
benefit St Wulfram's
Church, Help for
Heroes and The Army
Benevolent Fund.

Adrenalin junkies
can abseil down the
240 ft tower under
the expert guidance
of the Territorial
Army. Those who
are happier being
nearer the ground
might sponsor the
more adventurous
and come and enjoy
all the other events
on the day, such as
a hog roast, live
music, inflatable
assault course and
craft stalls.

For more information
and to obtain a spon-
sorship application,
ring 01476 563710.

LISTENING TO CARERS

Thursday, 3rd September 2009
Parklands Leisure Centre, Oadby,
1.00 to 4.30 pm

Focussing primarily on the concerns of those who care for the elderly, with
opportunities to learn about services for carers, discussion with those who
provide them, and meeting other carers. For more information: Christine
Middleton (tel. 0116 2293103) or email Christine@ccp.org.uk.

Scalford Parish Council

www.leicestershireparishcouncils.org

All information on current issues, etc., can be found on the website.

The next meeting will be held on Wednesday, 9th September, at 7.30 pm in the school

Councillors:

Elizabeth Bryan (chairman) 01664.444.206
Reg Talbott (vice chairman) 01664.444.343
Steven Bacon 01664 444375
Pat Green 01664 444615
Margaret Wright 01664 444354
Gillian Smith 01664.444.254

Sue Watford, tel. 01949 861256

SueWatford@aol.com

More than 170 Leicestershire Walks to download and print FREE!

There's no doubt about it, walking is good for you—for your heart, for your lungs, for the muscle and bone growth of your children, and for your feeling of well being! Strong scientific evidence supports the many benefits to health of regular walking—it is recommended that we take at least 10,000 steps a day. Walking:

- Reduces the risk of coronary disease and stroke
- Lowers blood pressure
- Reduces high cholesterol
- Reduces body fat
- Enhances mental wellbeing

John Harris, a keen walker, got fed up with the lack of information on County walks, so he decided to do something about it, and www.walkinginleics.co.uk is the result. It gives all the information you need for the best walking in Leicestershire, including details of walking groups, maps and walk books—and can all be downloaded and printed free.

So check out the website and get walking!

**Go LEARN!
COURSES FOR
ADULTS IN
MELTON &
BOTTESFORD
Why not sign up
for a part time
course starting in
September?**

More details:
Bottesford Community
Centre (01949 844199)
or Adult Learning at
Melton library
(0116 3057806),
or FREEphone
0800 988 0308
[www.leics.gov.uk/
golearn](http://www.leics.gov.uk/golearn)

WILL ROWBOTHAM OF EASTWELL

would like to thank
everyone who sent
cards and best wishes
to him on his 80th
birthday, which he
celebrated on
13th July.

*(A bit out of date,
but Will did ask me
to put this notice in
last month—no
proper filing system
round here!)*

NOTICES

SCALFORD AUCTION

Scalford Village Auction has again proved a great success, with £1,930.00 being raised for Village Hall funds. Special thanks are due to the willing volunteers who gave their time helping with the collection, doing the refreshments and helping at the auction.

The Village Hall Committee would also like to thank all the people who gave generously by donating the many items for sale.

SCOPE CHARITY Grand Canyon Trek—November

Alan Holmes will be taking part in a 7 day trek down, through and out the other side, to raise awareness and funds for the research into cerebral palsy, covering over 120 miles in beautiful but tough terrain.

Alan would appreciate any help in his fund raising, so please contact him on 01664 444269, email alan.holmes@moypark.com, or justgiving.com/alholmes.

Blackberries

If anyone has time to pick blackberries to make blackberry vinegar for the cancer fund, it would be much appreciated. Please contact Janet Allen on 01664 444 622.

EATON OPEN GARDENS

The Eaton Open Gardens event run by the Friends of St. Denys on Sunday, 26th July proved very successful, realising just over £1,000. This money will be allocated for the repair and refurbishment of the church porch.

The Friends would like to record their thanks to the owners of the 18 gardens involved for their wonderful support, without which of course the event would not have been possible. We should also like to thank those who assisted the committee members by running stalls or helping with the provision of teas. Throughout the planning stages we have been most grateful for the advice and advertising assistance we have received from Mr. Don Shields who made himself available at all the committee meetings.

Following the event, at a meeting of the committee and the garden owners, it was decided to hold a similar event next year.

Making Kids More Confident in Body and Mind

Every Sunday morning between September and April, around two hundred and fifty boys and girls between the ages of 6 and 18 converge on Melton Mowbray Rugby Club. Some, like former junior members, Scotland Internationals Sean and Rory Lamont, are drawn by the opportunity to hone their rugby skills for future stardom. For the majority, however, the motivation is far more straightforward; they want to keep fit, make new friends, get rid of excess energy, learn leadership and teamwork skills or simply have lots of fun getting muddy!

Working with school-year age groups, the dedicated team of RFU trained coaches focus on the children's fun and enjoyment whilst developing their technical rugby skills.

They start with non-contact 'tag' rugby up to the age of nine and then gradually and safely introduce the techniques and tactics that will take the youngsters on to the full contact sport by the age of twelve. For many, rugby is something that will stay with them well beyond childhood, providing a ready social circle and keeping body and mind fit into adult life, wherever that might take them.

It will soon be time to dig out the boots from the bottom of forgotten kit bags or even if you have never touched a rugby ball before come and join in as the new season kicks off on September 6th at the Melton Mowbray Rugby Club Burton Road site, starting at 10.30am. Non-members are welcome to come along and experience the fun for themselves with a free taster session.

For more information, e-mail:
mmrfcoffice@googlemail.com



EASTWELL FETE Bottle Tombola

There was a fantastic bottle collection this year. Thanks very much to all the people who donated and those who dropped bottles in afterwards, providing a great selection, and producing a new record for the tombola of £536. *Judy Goodson*

The PCC would like to thank everyone for helping to make this the best fete ever (according to reports). Behind the scenes you are aware of all the hitches, but obviously on the surface all was well! So many more people help in so many more ways each year, it continues to be a relaxed fun day for everyone. So thank you, thank you, thank you.

Final profits, raffle winners, etc., will be given next month.

Eastwell Harvest Festival Sunday, 27th September

This year, although non-perishable goods will also be very acceptable, the harvest produce decorating the church will be more traditional, with fresh fruit and vegetables.—so please leave or arrange (as you wish) any donations in the church, and hopefully we'll have a church full of flowers, fruit and vegetables this year. All will be donated to the Dove Cottage Hospice.

The service will be followed by a finger buffet: would anyone who is willing to contribute to this buffet, please get in touch with Janet Knapp (tel 861767) and let her know what they intend to bring. Janet will then arrange to fill the gaps!

SEPTEMBER CALENDAR



DAY	DATE	EVENT	PAGE
Tuesday	1st	Fashion Show, Eastwell church	8
Thursday	3rd	Eaton bingo	9
Friday	4th	Scalford bingo and tombola	9
Sunday	6th	Eaton Walk and Fete	7
Monday	7th	Eastwell PCC meeting, 7.30 pm Eastwell Post Fete meeting, 6.30 pm	7 8
Wednesday	9th	Tea and Cakes, Eastwell church Scalford Parish Council meeting	10 3
Thursday	10th	Eaton Parish Council meeting	2
Saturday	12th	Annual Churches Ride & Stride Day	8, 14
Sunday	13th	Teddy Bears' Extreme Sports Day, Scalford	7
Friday	18th	Scalford bingo	9
Saturday	19th	Eaton Village Dance	8
Sunday	20th	Cool Club, Waltham Village Hall	15
Wednesday	23rd	Eaton History Group Tea and Cakes, Eastwell church	8 10
Thursday	24th	Eastwell bingo	9
Friday	25th	MacMillan Coffee Morning, Goadby Marwood	8
Saturday	26th	"Mamma Mia" - Scalford Primary School	7
Tuesday	29th	Messy Church	15
Wednesday	30th	Eaton Village Cafe	8

HIRE OF VILLAGE HALLS

EATON
SCALFORD
GOADBY MARWOOD
EASTWELL

Jean Shields, 01476.870.580
Alan and/or Amanda, 01664.444.269
Colette Stein, 01664 464 823
Joanne Stewart, 01949.860915

SPECIAL EVENTS



TEDDY BEARS EXTREME SPORTS DAY

Sunday, 13th September

12.00 noon to 5.00 pm

Parachuting from the top of the church tower, bear agility and other extreme sports and activities for daredevil bears.

Parachute making on the day - Make sure your bear has the best chance of winning!

This year the parachuting and bear agility course will be split into classes as follows, for bears owned by:

- Children 10 and under
- Children age 11 to 18
- Dads, granddads and uncles
- Mums, grannies and aunties

Also—enter your bear into the fancy dress competition. The classes are:

- Silliest bear
- Night time bear
- Seaside bear
- Wartime bear
- OAP bear

Plus lots of other activities:

Bear Treasure Hunt - Bouncy Castle
BarBQue - Cakes, preserves and teas
Tombola - Face painting
Teddy Bear stories - Raffle

VENUE:

St Egelwin's Church, Scalford

EATON WALK AND FETE

Sunday, 6th September

**Walk Registration 11.30 am
at the Village Hall**

12 noon start

Registration £2.50 per adult,

£1.50 concessions/OAPs

Children free or raise sponsorship

Prizes for children

with the most sponsors!

Followed by

**Fete at Eaton Community Park
1.00 to 5.00 pm Free Entry!!**

**Scalford
Preschool & Primary School
Invites you to
MAMMA MIA!**

**The sing-along
Saturday, 26th September
7.00 pm**

SCALFORD VILLAGE HALL

Adults £5, children £3.50
(includes a drink, nibbles and film)
Tickets from Amanda on 444269



POST FETE MEETING

Monday, 7th September at 6.30 pm in the Church

Anyone who has an opinion on anything which went wrong, anything which was good, and anything which can be improved, is welcome to attend. The meeting can last no longer than an hour, because there is a PCC meeting at 7.30 pm.

EATON

LOCAL HISTORY GROUP

Wednesday, 23rd September

7.30 pm in Eaton Village Hall

**PRATICAL SESSION FOR THE
EXHIBITION**

Further details: 01476 879289

CANDLELIT YOGA



at

Goadby Marwood

Village Hall on Wednesdays,

7.00 to 8.00 pm

Starting 23rd September 2009

Breathe Pranayama

Bend ... Uttanasana

Stretch ... Tadasana

Twist ... Matsyendrasana

Relax ... Sivasana

Colette Stein BSY (Th) 01664 464823

Colette.stein@btinternet.com

**Member of the NHS Directory of
Complementary and Alternative
practitioners**

EASTWELL FASHION SHOW

Tuesday, 1st September

7.30 pm in EASTWELL CHURCH

All proceeds in aid of

St Michael & All Angels, Eastwell

Tickets, £3.50,

includes a glass of wine

Stella Brammer (01949 861827)

Jenny Barnes (01949 860206)

EASTWELL PCC MEETING

**7.30 pm Monday, 7th September
in the church**



**Historic Churches
Preservation Trust**

**ANNUAL RIDE &
STRIDE DAY**

Saturday, 12th September

*If you'd like to join in this fun day and
raise some money for a church of your
choice, please see your churchwarden
for a sponsorship form.*

**MACMILLAN
COFFEE MORNING
Friday, 25th September 2009
10.00 am to midday**



Please join us for a
morning coffee,
newspaper, hot croissants
and toasted teacakes.

**GOADBY MARWOOD
VILLAGE HALL**

**Home made cakes and preserves
Bring and Buy and raffle**

EATON VILLAGE DANCE

Saturday, 19th September

For tickets, please contact
Sheila on 01476 870367

EATON VILLAGE CAFÉ

**Wednesday, 30th September
in the Village Hall**

**10.30 am to 12.00 noon
Everybody welcome**



DOVE COTTAGE DAY HOSPICE Grand Auction

Saturday, 19th September

Viewing commencing at 12.00 noon

Bidding starting at 1.30 pm

If you enjoy bidding for a bargain come and join the fun and help us to raise some funds for the hospice. Don't forget to empty those cupboards, lofts, sheds and garages, as donations of items to sell are always welcome.

Goods are accepted the week prior to the auction, Monday to Thursday, between 9.00 am and 4.00 pm. Collection may be available; please call the hospice.

Dove Cottage Day Hospice,
Canal Lane, Stathern, LE14 4EX.
Tel 01949 860303
Email: office@dovecottage.org



Community
Transport
Projects
working with



Community Transport

www.leicestershirevillages.com/communitytransport

Community Transport is available to those who find it difficult to use public transport. It can be used for doctors' appointments, visiting friends and relatives, shopping and social activities.

For more information see the website www.leicestershirevillages.com/communitytransport, or phone Traveline on 0871 2002233.



Lose it, Shape it! **FAT BURNING** **AEROBICS & TONING**

Recommencing

7th September 2009

Monday, 8 to 9pm: Harby Village Hall

Tuesday, 10.15 to 11 am

Hose Village Hall (Lower intensity)

Tuesday, 7.30 to 8.30 pm

Waltham Village Hall

Friday 9.30 – 10.30am

Waltham Village Hall

ALL CLASSES £3.75 (HOSE £3.50)

PAY AS YOU GO.

*Suzanne Rathbone RGN RM (Register
of Exercise
Professionals) 01949 860911*

BINGO

SCALFORD

in the village hall, 7.30 pm

Friday 4th September

*Plus a tombola in aid of the Methodist
Church new kitchen project.*

*(Anyone willing to give a prize or dona-
tion would be much appreciated)*

Friday, 18th September

in aid of the new

Scout HQ appeal.

EATON

Thursday, 3rd September

7.30 pm in the Village Hall

EASTWELL

Thursday, 24th September

7.30 pm in the institute

Tea and Cake at Eastwell Church

Tea and cake is being served from 2.30 to 4.00 pm on alternate Wednesday afternoons. Everyone is welcome to come along to these social afternoons, for which there is no charge. Already three have been

held, and these have been very enjoyable and successful, offering a chance to chat to your neighbours and anyone else who happens to be there. They are held on the Wednesday preceding "black bin day", which this month will be on 9th and 23rd September. Why not coming along and try them?

FORTHCOMING EVENTS

St Mary's Church Chadwell & Wycomb

HARVEST FESTIVAL

20th September, 4.00 pm

CHRISTMAS LIGHTS

6th December at 5.00 pm

CAROL SERVICE

20th December, 4.00 pm

Eaton Local History Group

EXHIBITION:

31st October

Friends of St Denys, Eaton

Christmas Lunch:

13th December

St Egelwin's Appeal

BACK TO THE FUTURE

Other Forthcoming Events

Saturday, 10th October

FORTIES DANCE at SCALFORD VILLAGE HALL

Featuring:

40s disco with King Conker
Dickie Lines, Wartime Entertainer
Supper : Bar : 40s themed raffle

Dancing with "spot" prizes
Tickets £15 per person, available from

Penny Clemons at Scalford School
on 01664 444282

or send cheques made payable to St Egelwin's Church, to The Willows, Ironstone Lane, Holwell, Melton Mowbray, LE14 4SU
Come and join us for a fabulous forties night!

Saturday, 14th November

AUTUMN SUPPER

Sunday, 29th November

CHRISTMAS COMES TO SCALFORD

Watch this space for further details.

MOBILE LIBRARY VISITS

CHADWELL:	8th/22nd September	3.55 to 4.10 pm	Post Box
SCALFORD:	14th/28th September	1.15 to 2.00 pm	Village Centre
EATON	7th/21st September	11.20 to 11.35	Lings Close
		11.49 to 12.10 pm	Church Walk
EASTWELL, GOADBY MARWOOD, WYCOMB: 10th/24th September			
Eastwell:	10.40 to 11.00 am	Village Hall	
Goadby Marwood:	10.00 to 10.30 am	High Wall junction	
Wycomb:	9.35 to 9.50 am	Wyggeston Cottage	
Tel 0116 265 6988 Email: libraries@leics.gov.uk			
Website: www.leics.gov.uk/libraries 24 hour renewals: 0845 602 2815			

LOCAL GROUPS CONTACTS

Eastwell Kids' Club	Jo Stewart—01949.860915 or Janet Lusi—01949.860772
Eaton Local History Group	Wendy Stanley, 01476 879289
Eaton Community Park Assn	Tim Bryan, 01476 879380, Eatoncompark@aol.com
Little Gems/Cool Club	Shuna George—01664.464.115
Parish Reading Group	Colette Stein on 01664.464.823
Scalford Parent/Toddler Group	Anita on 01664.564200 or 07828.953015
Scalford Badminton Club	01664.444240 or 0115.9089.9915
Scalford Post Office	Kathleen Hewitt 01664.444.868
Scalford Reading Group	Margaret Lee 01664.444.240
Scalford Women's Institute	Helen McNamara—01664.444673
Scalford Neighbourhood Watch	Alan Hodgkinson—01664.444689.
Cllr Elaine Holmes (MBC)	01664.444.230 - email: elaine@eholmes2@orangehome.co.uk
Cllr Byron Rhodes (LCC)	01949 860029, brhodes@leics.gov.uk

SMALL ADS**EXERCISE CLASSES****Aerobics and body tone**

Harby Village Hall, Mon 8-9pm

Hose Village Hall, Tue 10.15-11.00 am
(lower intensity)

Waltham Village Hall, Tue 7.30-8.30 pm

Waltham Village Hall, Fri 9.30-10.30 am

Contact: Suzanne Rathbone,
01949.860911**D M CASEY****CARPENTRY & JOINERY
SPECIALIST**

Tel: 01664.444.664

Mobile: 07891.921.780

BABYSITTING

Hannah, Vicky and George Norgate

Tel. 01949.861721

TAPES TO CDS

£5.00 per tape

Contact Victoria or Charlie Evans on
01664.444.540

E-mail: zac25ed@aol.com

**"IMPRESSED", LOCAL IRONING
SERVICE.**

Please telephone 07766 210351.

COMPUTER SOS

Your local specialist for:

Slow/crashed computers

Internet setup/problems, etc.

Tel. 01949.861834/0789.4352517.

**ROSEMARY CONLEY DIET &
FITNESS CLUB**Six classes available in the Melton
area. Contact Maureen on
01664.850572 for times and
locations.**FRENCH LESSONS**

With fluent French speaker

(graduate). Improve your French
for school, business or holidays. All
ages and initial skill levels catered
for.Contact Phil Cree on 01949.861582,
mobile 07905.126730.**REVIVAL HEALTH & BEAUTY
TREATMENTS**To reinvigorate your body, mind and
soul.Catherine Clemons, The Willows,
Ironstone Lane, Holwell, LE14 4SU.
Tel. 07919.562.056.**HATHA YOGA COURSE**

Wednesdays, 1.30 to 3.00 pm

Waltham Village Hall—new course
starts 23rd September

Thursday, 7.30 to 9.00 pm

Scalford Village Hall—new course
starts 24th SeptemberTel Helen on 07850 024179 for more
information and to book your place.**HORSE CLIPPING**Prices from £15, Kirsty Whitworth,
tel. 01949.860647,
mobile 07825 957555

TOTE RESULTS

EASTWELL

The August winners had not been drawn at the time of going to print, and will be listed next month. *They will be drawn on the last Saturday, which is 29th August.*

SCALFORD

Charlie Allen : Alf Naylor
Mrs Payne
200 Club:
Philip Harris : Mick Lee
Colin Scarborough : Reg Talbott

GOADBY MARWOOD

July 2009
22 Dave Gardner : 27 Josie Bell

49 Dean Hargrave
55 Sophie Billington

August 2009

6 Cathy Lawrance : 25 Nigel Bell
48 Monica Hargrave
50 Dorothy Harwood

TOTE CONTACTS

SCALFORD:

Janet Allen, 01664.444.622

GOADBY MARWOOD:

Joan Gardner—01664.464.755

CHADWELL/WYCOMB:

Ron Edwards—01664.444.439

EASTWELL:

Sue Watford—01949.861256

CHURCH NOTICES

Flowers & Cleaning

EASTWELL

Cleaning:

6th September: *Nina Clayton*

13th September:

Lindy Coonie/Marion Wood

20th September: *Sue Norgate*

27th September:

Judy Goodson and Sue Watford

4th October: *Nina Clayton*

Flowers:

6th September: *Jane Hewson*

13th September: *Judy Goodson*

20th September: *Janet Knapp*

27th September: *Annie Casson*

4th October: *Megan Chandler*

EATON

Cleaning:

4th/11th September:

Mrs C Fenwick & Mrs P Willmore

18th/25th September: *Rita Whiting*

Flowers:

13th September: *Aileen Dee*

27th September: *Wendy Harrison—*

**ALL HELP WITH THE HARVEST
FLOWERS WELCOME**

SCALFORD

Flowers:

7th September - *Pam Tripp*

21st September - *Pat Green*

Cleaning:

7th September—*Pat Green*

21st September - *Libby Leiper*

EASTWELL CHURCH FLOODLIGHTING

During September the church will be floodlit:

to celebrate the birthdays of

TIM PEDLAR on 9th September

KATE VAN DOORN on

17th September, and

PETE VAN DOORN on

24th September

and in memory of:

ALAN BARNES on 13th September

RIDE & STRIDE DAY Saturday, 12th September

This day (the second Saturday in September) is organised by the Historic Churches Preservation Trust. It can also be seen as a churches' open day, when many churches which are otherwise kept locked, are open.

It is a sponsored ride or walk round any churches you choose (lists of those participating are issued with sponsorship forms), and half the money raised goes to the Trust (which in turn is given out in grants for the maintenance of church buildings), and half to any Christian church of your choice.

If you would like to take part (riding, walking or welcoming visitors in church), please ask your churchwardens for further details.



www.e-Kit.co.uk
inbox@e-Kit.co.uk
(0800) 0432 832

e-Kit Business Websites

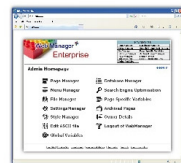
Reduce costs of website purchase, ownership and updating
Look Professional & engage visitors with fresh web content
Generate enquiries & sales with optimised web pages

Web Manager packages are the latest generation of business website solutions.

They enable businesses to easily manage, edit and publish professional business websites themselves, without the need for technical web knowledge.



Have a professional website online that is simple to use



Add and update pages yourself, anytime with e-Kit Web Manager

Web design & development | Content management systems | Graphic & interactive design
Online marketing & SEO | Business web hosting | Domain name registration

METHODIST CHURCH SERVICES

	SCALFORD, 10.45 am	GOADBY MARWOOD, 6.00 pm
6th September	Mrs J Norburn	United service, Songs of Praise at the Old Rectory Mrs H Orridge, 5.00 pm
13th September	Mrs M Ward	Mr G Garfoot
20th September	Revd David Key (HC)	Harvest Festival Mrs M Ayto
27th September	United Harvest Festival Revds B Stark/D Key 3.00 pm	Revd Philip Macdonald
CONTACTS	Mr R Talbott 01664 444343	Mrs H Turner 01664 812618

MESSY CHURCH

Tuesday, 29th September

3.30 to 5.00 pm

SCALFORD VILLAGE HALL

Messy Church is for ages 0-100,
and anyone from Scalford,
surrounding villages or Melton,
is welcome to come and join in.

Penny Jackson 01664 444293,
or email:
nigelpenny@nigelpenny.plus.com.



**COOL
CLUB**

Sunday,

**20th September at 10.00 am
Waltham Village Hall**

*All age fun for children
age 0-11 yrs and their families*
Shuna George, 01664 464115

CHURCHWARDENS

EATON:

Mark Edmunds (01664.464.391)

Mrs Aileen Dee (01476.870.306)

EASTWELL:

Denis Hubbard (01949 860362)

Sue Watford (01949.861256)

GOADBY MARWOOD:

Dave and Joan Gardner

(01664.464.755)

SCALFORD:

Elizabeth Leiper (01664.444.266)

Penny Clemons (01664.444.687)

STONESBY:

Laurence Griffiths (01664 464227)

Edwin Hewlett (01664 464439)

WALTHAM:

Richard Miller (01664 464240)

Chris Alexander (01664 464802)



Church Services

The Revd Beverley Stark—tel. 01664 464600

The Revd Clare Connell—tel. 01949 81424



Sunday, 6th September—TRINITY 13

10.30 am	Scalford	Joint Benefice service—Revd Beverley Stark
5.00 pm	Goadby Marwood	Songs of Praise

Sunday, 13th September—TRINITY 14

9.30 am	Eaton	Morning Worship
9.30 am	Goadby Maarwood	Morning Prayer—Revd Clare Connell
9.30 am	Stonesby	Holy Communion (BCP) - Revd B Stark
11.00 am	Waltham	Family Communion—Revd Clare Connel
7.30 pm	Waltham	Evening Praise—Revd Beverley Stark

Sunday, 20th September—TRINITY 15

9.30 am	Eastwell	Holy Communion (sung) - Revd B Stark
9.30 am	Stonesby	Matins
2.00 pm	Waltham	Harvest with Choir
4.00 pm	Chadwell	Harvest—Harriet Orridge

Sunday, 27th September—TRINITY 16

9.30 am	Goadby Marwood	Holy Communion—Revd Peter Newton
10.00 am	Stonesby	Harvest—Revd Beverley Stark
11.00 am	Waltham	All Age worship—Harriet Orridge
3.00 pm	Scalford	Harvest—Revd Beverley Stark
4.00 pm	Eastwell	Harvest—Harriet Orridge
6.00 pm	Eaton	Harvest—David Stark